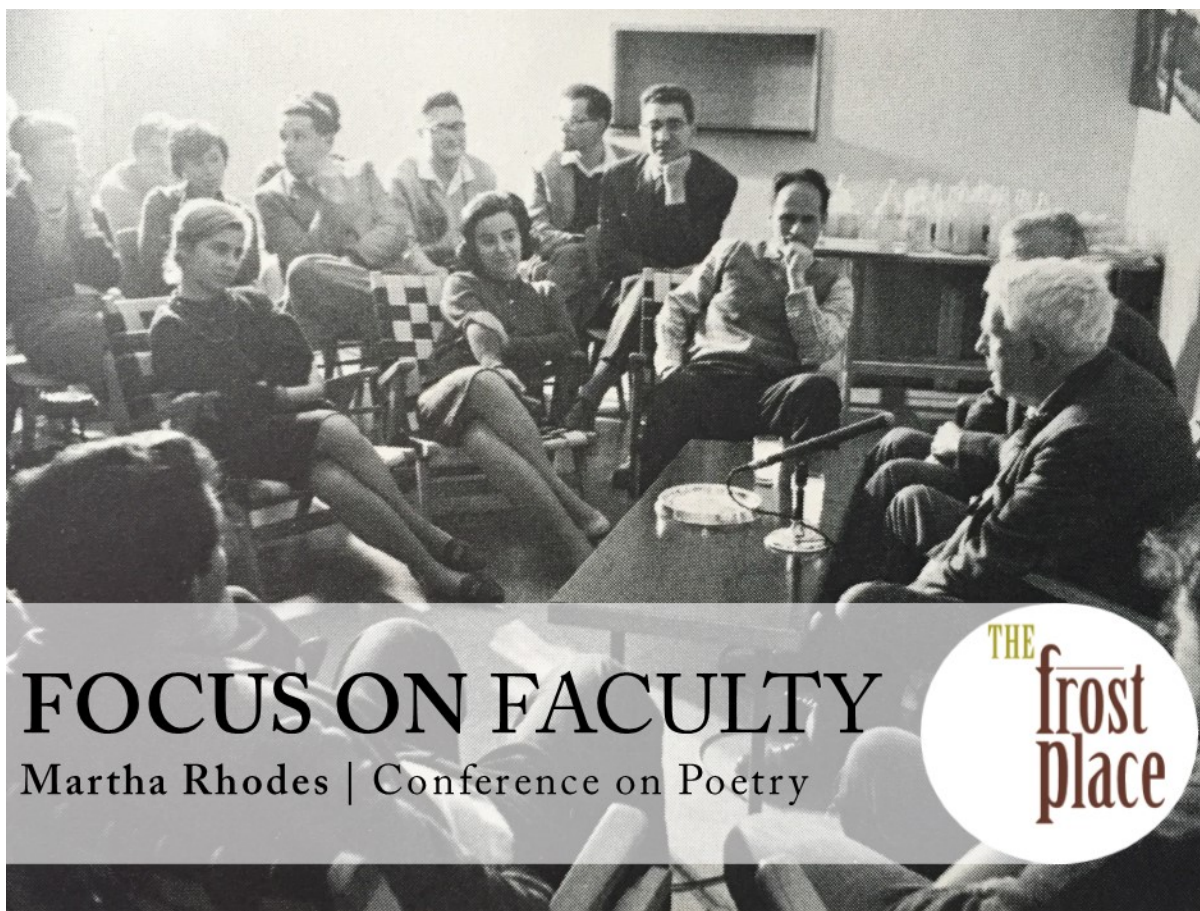


Conference on Poetry  
Director and Faculty, Martha Rhodes

[View this email in  
your browser](#)



## FOCUS ON FACULTY

Martha Rhodes | Conference on Poetry

THE  
frost  
place

### In This Issue:

#### Focus On: Martha Rhodes

- [Meet Martha Rhodes, Director and Faculty](#)
- [On Teaching Poetry](#)
- [On Martha's Bookshelf](#)
- [On the Writing Process](#)
- [Ascension - A Poem by Martha Rhodes](#)

#### Around the Frost Place

- [Help Design The Frost Place's 2016 T-Shirts](#)
- [Patrick Donnelly hosts 'Poets for Life: Poets Respond to AIDS' Apr. 9](#)

- [An Excerpt from "For Once, Then, Something" by Robert Frost](#)
  - [Information about Summer Programs](#)
  - [How to Apply to Summer Programs](#)
  - [Donate to The Frost Place](#)
- 

## Help Design The Frost Place's 2016 T-Shirts



We could use your help to design brand, spanking new 2016 t-shirts for The Frost Place. Take 5 seconds and pop over to [our blog](#) to vote on your favorite Robert Frost quote, and your choice could become our new design!

---

## Patrick Donnelly hosts ‘Poets for Life: Poets Respond to AIDS’ on April 9

“In the 35 years since AIDS began, there has been not only a medical and social-service response to preventing and treating the disease, but there has also been a response from artists of all kinds, mourning the losses and celebrating the victories,” Donnelly said. “Specifically, American poets have created an entire literature of AIDS, leaving for the future an important record of this time.”

Poets for Life will feature readings by award-winning poets Eduardo C. Corral, Patrick Donnelly, Michael Klein, and Joan Larkin, who will read not only from their own poetry about the epidemic, but from the work of other notable poets, living and dead. Singer-songwriter Laura Wetzler will also perform.

Saturday, April 9 at 3 p.m

Paradise Room, Conference Center, Smith College, 51 College Lane,  
Northampton

READ MORE

---

## Meet Martha Rhodes, Director and Faculty



Martha Rhodes' website [read more...](#)

Martha Rhodes, director and faculty member of The Frost Place's Conference on Poetry, is the author of four poetry collections: *The Beds*, *Mother Quiet*, *Perfect Disappearance* (winner of the Green Rose Prize), and *At the Gate*. She is a member of the faculties of Sarah Lawrence College and the MFA Program for Writers at Warren Wilson College. A former member of the board of trustees of The Frost Place, she now serves on the advisory board. She has directed the Conference on Poetry since 2010. Martha Rhodes is the director of [Four Way Books](#) in NYC.

---

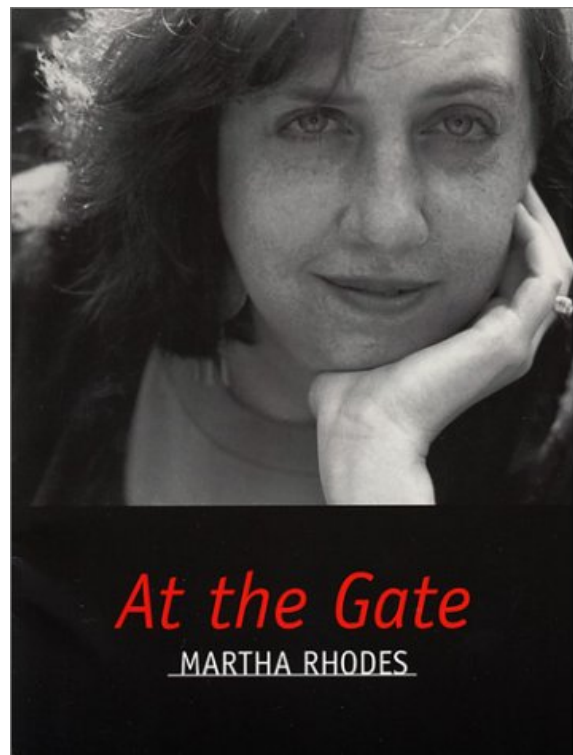
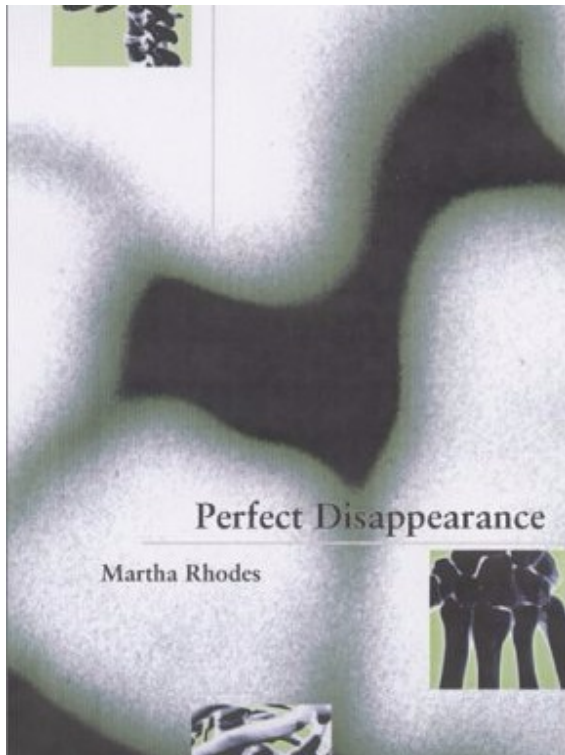
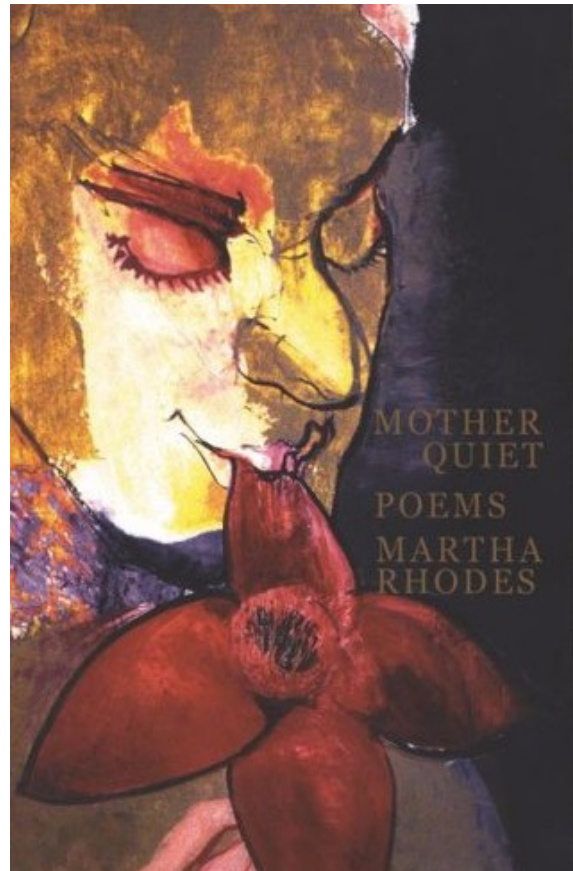
APPLY

---





the beds | martha rhodes



---

## On Teaching Poetry

"Where is the reader  
now? now? now?"

I believe in revision, deep revision. And so, I  
ask myself as a writer, and those writers I  
work with, to challenge the poem in every way

—from the words themselves, to the order of the words (syntax), to structure—  
punctuation, pacing, tone, temperature—all the elements that make up the  
poem need to be looked at and evaluated. I believe that the relationship  
between poem (not poet) and reader is of utmost importance so I teach with  
this relationship in mind—where is the reader now? now? now? Answer that,  
and we begin to understand how to move around in our own poems, how to  
revise them.

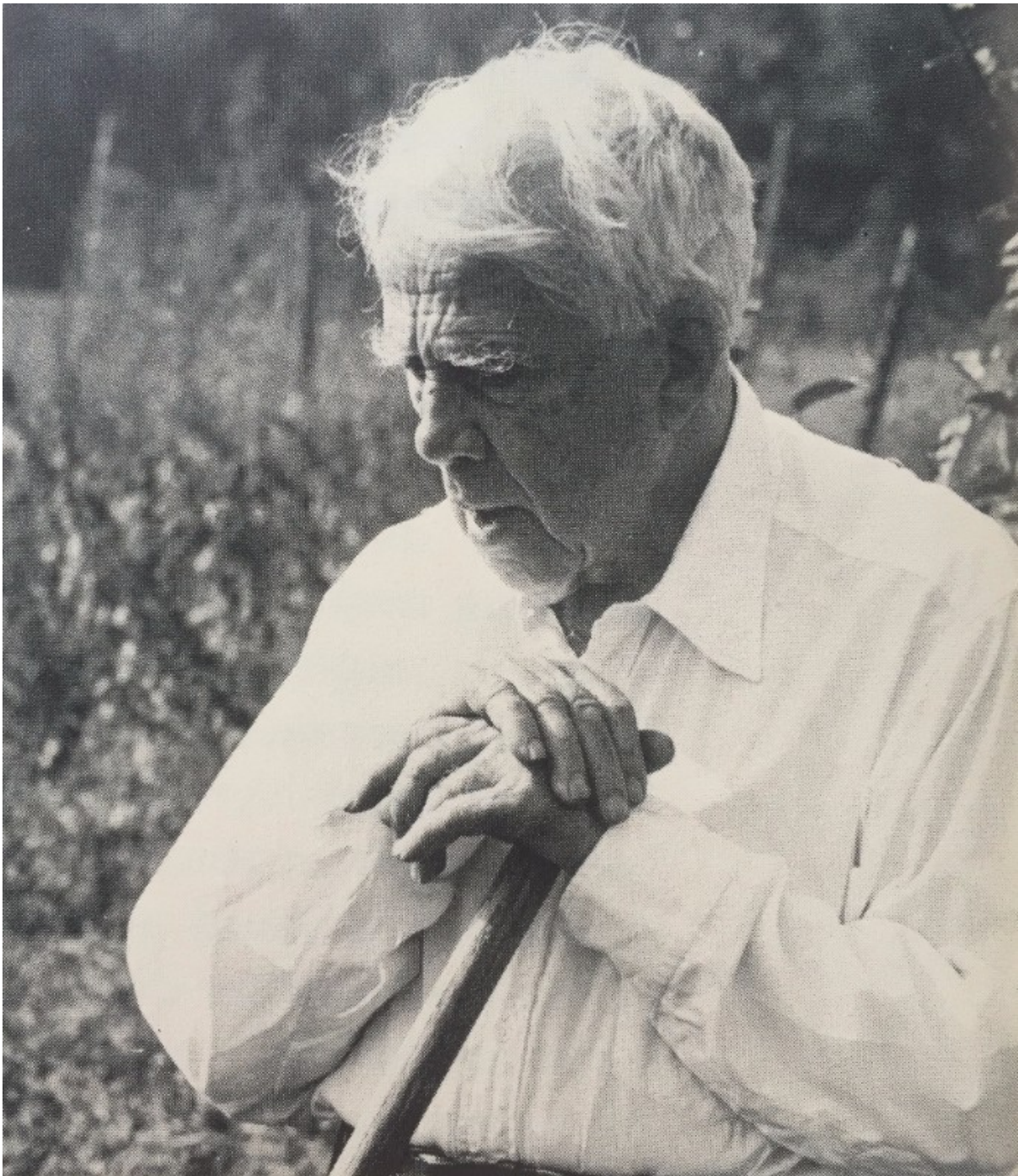
---

"Others taunt me with having knelt at well-curbs  
Always wrong to the light, so never seeing  
Deeper down in the well than where the water  
Gives me back in a shining surface picture  
Me myself in the summer heaven godlike  
Looking out of a wreath of fern and cloud puffs."

(From "For Once, Then, Something" by Robert Frost in Harper's Magazine, July  
1920.)

---





---

## On Martha's Bookshelf

Your favorite craft books and essays?

-[Poets Work, Poets Play](#) edited by Daniel Tobin and Pimone Triplett

-[Poets Teaching Poets](#) edited by Gregory Orr and Ellen Bryan Voigt

[-The Art of the Poetic Line](#) by  
James Longenbach

[-In the Blue Pharmacy](#) by  
Marianne Boruch

Whose poetry do you return to  
over the years, or lately?

I return often to my generation's  
poetry grandparents—Lowell,  
Roethke, Bishop, Berryman—and  
also read as much new poetry as  
possible by my generation's  
children. Of course, I read my  
contemporaries. But I draw my  
inspiration, mostly, from those  
who came before me.

---

## On the Writing Process

"Rather than wait  
for the perfect  
writing time—it  
never seems to arrive  
anymore—I force  
work out onto the  
page each day."

I am not by temperament an every day writer,  
but of late I have been writing each day and  
it's been an interesting process. I have only  
minutes to write sometimes but make the best  
of them, then accumulate the work of a month  
or two and print everything out, sit with it,  
start to scratch out revisions, and go from  
there.

That's how I've been working of late. It's new to me, exhilarating, and  
productive. Rather than wait for the perfect writing time—it never seems to  
arrive anymore—I force work out onto the page each day. Then find time at  
some point to really hunker in with it.

---

## Ascension

A Poem by Martha Rhodes

Rose, the mother,  
as her child rose,  
up into the trees,

with her shattered child.

In her arms, the bifurcated child.  
“Don’t go, don’t go,” cries  
of the husband. “Don’t  
Leave me. I can’t bear it,”

though surely he could  
come if he wanted,  
she thought, he could  
will himself up, up, to join

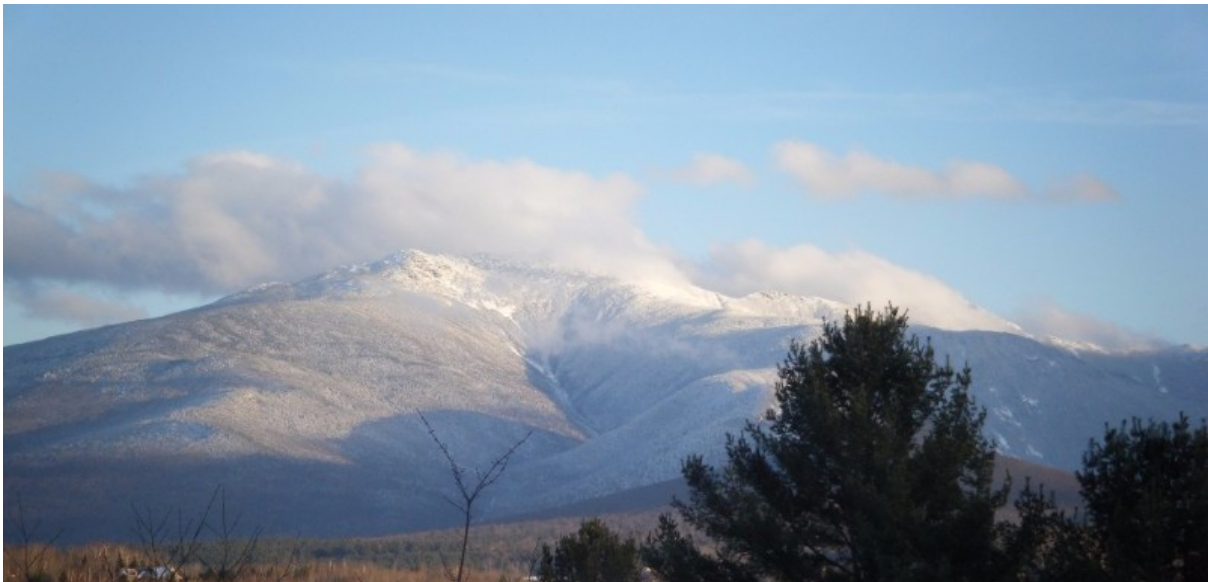
them, his small family.  
John! But there he stands,  
smaller and smaller. “Look  
darling child, there’s your father.

Now shut your eyes and forget him.”

Originally published in Provincetown Arts Magazine

---

## More Information About Summer Programs



Conference on Poetry and Teaching | June 25 - 29, 2016

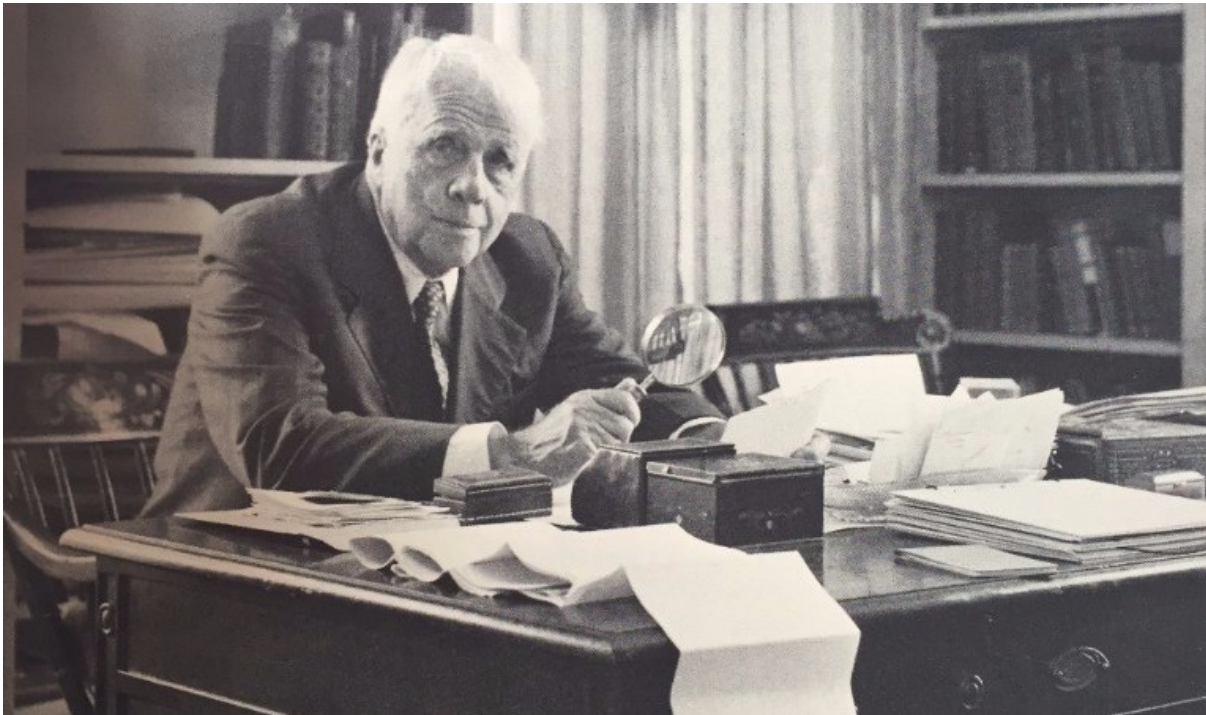
Director: [Dawn Potter](#) Associate Director: [Teresa Carson](#)



Faculty: [Kerrin McCadden](#), [Rich Villar](#)

Held each year in June, the Conference on Poetry and Teaching is a unique opportunity for teachers to work closely with both their peers and a team of illustrious poets who have particular expertise in working with teachers at all levels.

[READ MORE](#)



Writing Intensive | June 29 - 30, 2016

Director: [Afaa M. Weaver](#)

The Frost Place Writing Intensive is a day-and-a-half reading and writing workshop that directly follows the Conference on Poetry and Teaching. Led by renowned poet-teacher Afaa Micheal Weaver, it gives teachers the opportunity to focus entirely on their own creative growth.

[READ MORE](#)



Conference on Poetry | July 10 - 16, 2016

Director: [Martha Rhodes](#)

Faculty and Fellow: [Gabrielle Calvocoressi](#), [Maudelle Driskell](#), [Rachel Eliza Griffiths](#), [Michael Klein](#), [Matthew Olzmann](#) and [Collier Noguez](#)

Spend a week at “intensive poetry camp” with writers who are deeply committed to learning more about the craft of writing poetry.

[READ MORE](#)



Poetry Seminar | July 10 - 16, 2016

Director: [Patrick Donnelly](#)

Faculty: [Ilya Kaminsky](#), [Cleopatra Mathis](#), [Lyrae Van-Clief Stefanon](#)

You're invited to join a select community of poets for 5-1/2 days this August to refresh your artistic inspiration in a setting of great natural beauty.

[READ MORE](#)

---

Copyright © 2016 The Frost Place, All rights reserved.

Want to change how you receive these emails?  
You can [update your preferences](#) or [unsubscribe from this list](#)

[Donate to The Frost Place](#)